

Н

Технические характеристики

По вопросам продаж и поддержки обращайтесь:

Алматы (7273)495-231
Архангельск (8182)63-90-72
Астрахань (8512)99-46-04
Барнаул (3852)73-04-60
Белгород (4722)40-23-64
Брянск (4832)59-03-52
Владивосток (423)249-28-31
Волгоград (844)278-03-48
Вологда (8172)26-41-59
Воронеж (473)204-51-73
Екатеринбург (343)384-55-89
Иваново (4932)77-34-06
Ижевск (3412)26-03-58
Иркутск (395)279-98-46
Россия (495)268-04-70

Казань (843)206-01-48
Калининград (4012)72-03-81
Калуга (4842)92-23-67
Кемерово (3842)65-04-62
Киров (8332)68-02-04
Краснодар (861)203-40-90
Красноярск (391)204-63-61
Курск (4712)77-13-04
Липецк (4742)52-20-81
Магнитогорск (3519)55-03-13
Москва (495)268-04-70
Мурманск (8152)59-64-93
Набережные Челны (8552)20-53-41
Нижний Новгород (831)429-08-12
Киргизия (996)312-96-26-47

Новокузнецк (3843)20-46-81
Новосибирск (383)227-86-73
Омск (3812)21-46-40
Орел (4862)44-53-42
Оренбург (3532)37-68-04
Пенза (8412)22-31-16
Пермь (342)205-81-47
Ростов-на-Дону (863)308-18-15
Рязань (4912)46-61-64
Самара (846)206-03-16
Санкт-Петербург (812)309-46-40
Саратов (845)249-38-78
Севастополь (8692)22-31-93
Симферополь (3652)67-13-56
Казахстан (7172)727-132

Смоленск (4812)29-41-54
Сочи (862)225-72-31
Ставрополь (8652)20-65-13
Сургут (3462)77-98-35
Тверь (4822)63-31-35
Томск (3822)98-41-53
Тула (4872)74-02-29
Тюмень (3452)66-21-18
Ульяновск (8422)24-23-59
Уфа (347)229-48-12
Хабаровск (4212)92-98-04
Челябинск (351)202-03-61
Череповец (8202)49-02-64
Ярославль (4852)69-52-93

Сигнальный клапан модели Н

Сигнальный клапан HD действует как обратный клапан, улавливая воду под давлением над заслонкой и предотвращая обратный поток из спринклерной трубы. Используется для срабатывания пожарной сигнализации при подаче воды из спринклерной системы. Сигнальный клапан внесен в список UL и одобрен FM.

- Материал из ковкого чугуна в соответствии с ASTM - A536
- Доступны фланцевые x фланцевые, калиброванные x калиброванные и калиброванные x фланцевые
- Максимальное рабочее давление 17,5 бар (250 фунтов на кв. дюйм)
- Размер: 80, 100, 150 и 200 НБ
- Трим с регулируемым давлением с тормозной камерой и гонгом водяного двигателя
- Трим постоянного давления доступен в качестве опции
- Эпоксидная смола окрашена внутри и снаружи
- Внесен в список UL и одобрен FM



TECHNICAL DATA

MODEL	H
END CONNECTION	Flange X Flange Flange X Groove Groove X Groove
NOMINAL SIZE	200, 150, 100 & 80 NB
MAXIMUM SERVICE PRESSURE	17.6 kg/sq.cm (250 psi)*
THREADED OPENING	BSPT
MOUNTING	Vertical
FLANGE CONNECTION	ANSI B16.42 #150 (Flange drilling matching to ANSI B 16.5#150) Standard Supply.
TRIM	Galvanized fittings with Brass Valves
FACTORY HYDROSTATIC TEST PRESSURE	35 bar (500 psi)
FRictional LOSS IN TERMS OF EQUIVALENT LENGTH OF PIPE (C-120)	200 NB - 7.5 Mtrs. 150 NB - 7.0 Mtrs. 100 NB - 6.1 Mtrs. 80 NB - 4.7 Mtrs.
FINISH	Red RAL 3001
APPROVAL	UL Listed & FM Approved
ORDERING INFORMATION	Specify size of valve, trim details, grooved valve pipe outside diameter.
REFERENCE	NFPA 13 and NFPA 25

* For 200 NB, FM approval is rated upto 200 psi (14 kg/sq.cm)

WEIGHT IN KG

Valve Size	Flange X Flange	Flange X Groove	Groove X Groove
3" (80 NB)	18	15.0	12.10
4" (100 NB)	27	22.1	17.30
6" (150 NB)	42	35.8	28.0
8" (200 NB)	65	54.0	44.0

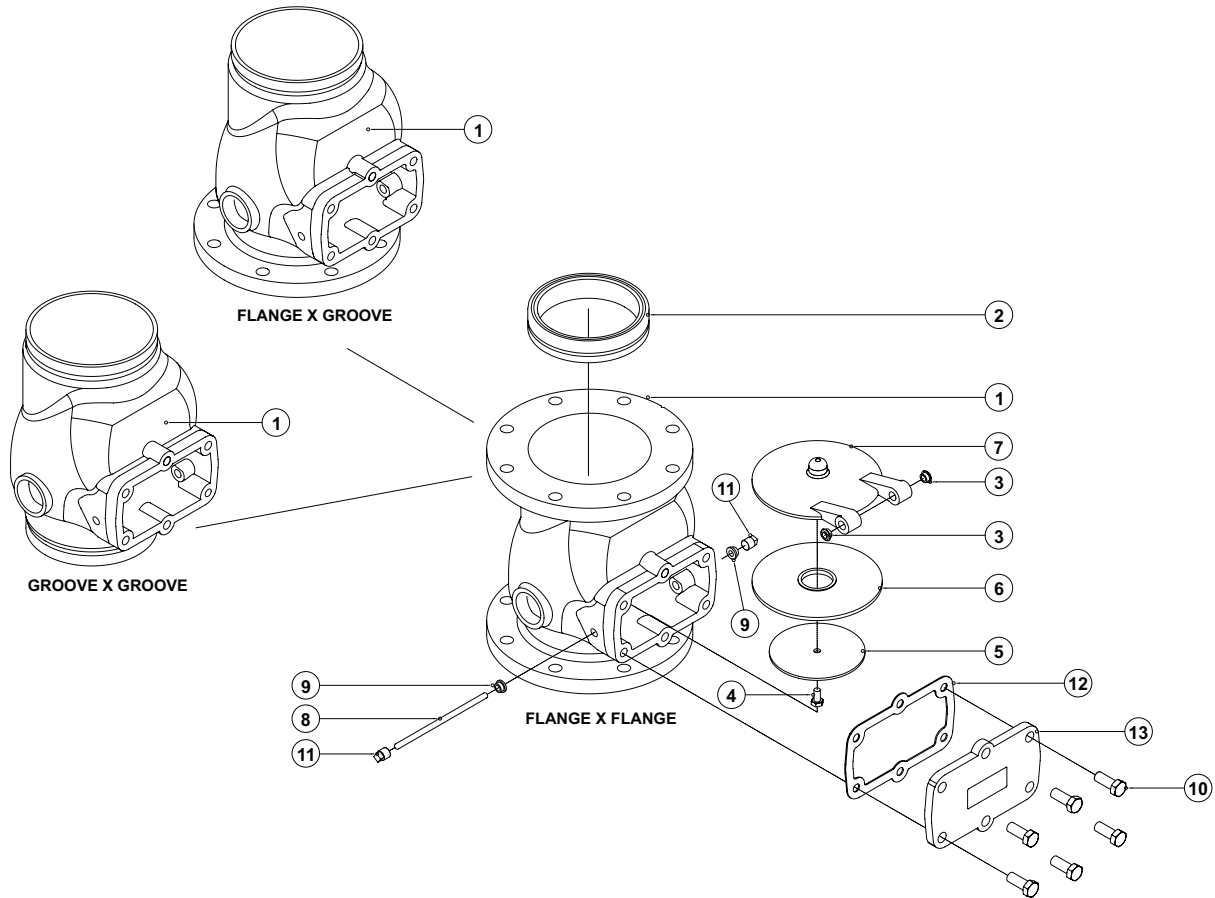
GROOVE PIPE SIZE

NORMAL SIZE	Pipe OD in mm
3" (80 NB)	89
4" (100 NB)	114.3
6" (150 NB)	165.1
6" (150 NB)	168.3
8" (200 NB)	219.1

NOTE: FOR 6" (150 NB) STANDARD SUPPLY IS 168.3 mm OD PIPE GROOVE. FOR 165.1mm REQUIREMENT, SPECIFY IN ORDER



ALARM VALVE, MODEL - H SIZE 200 / 150 / 100 / 80 NB



PART LIST

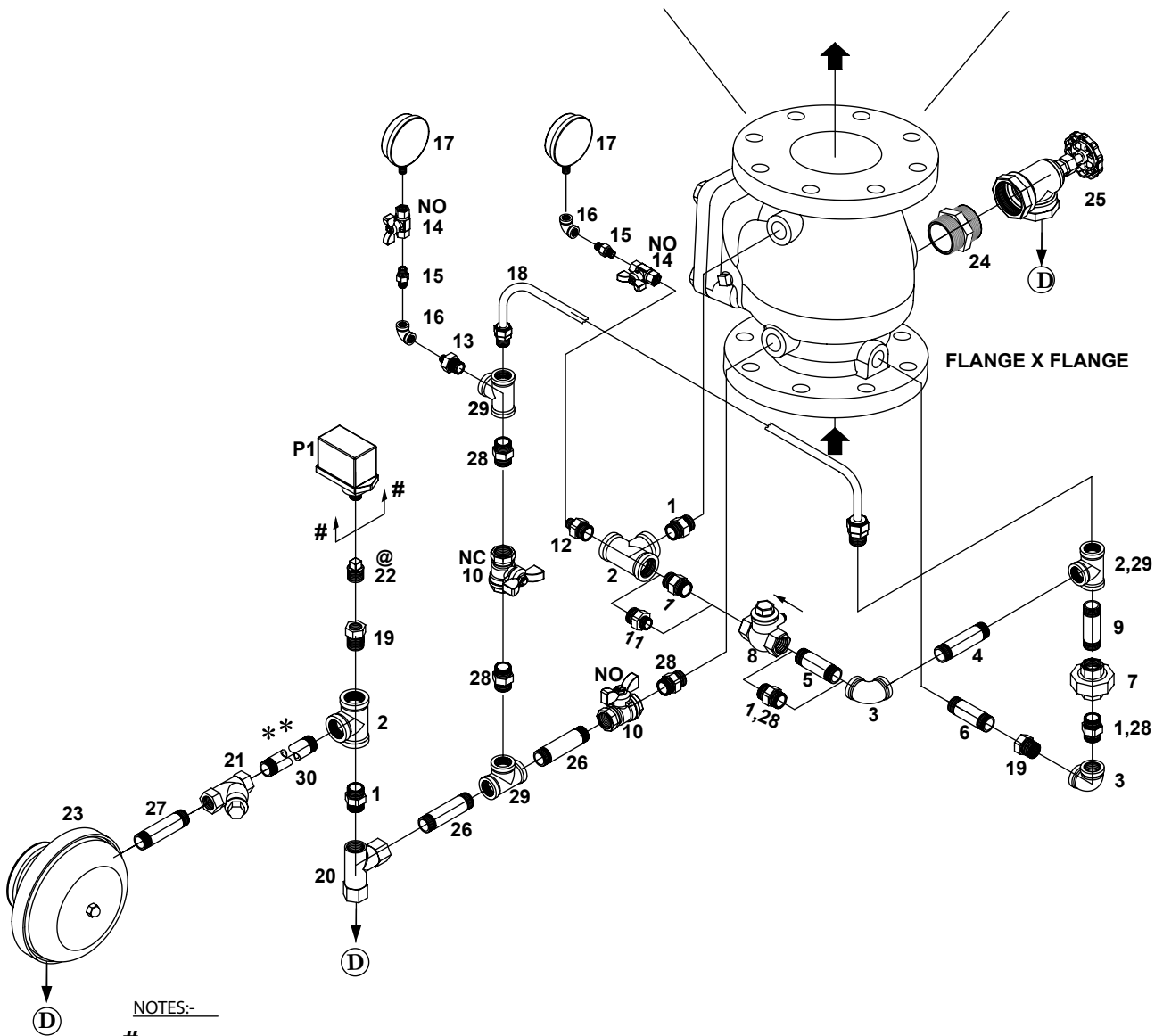
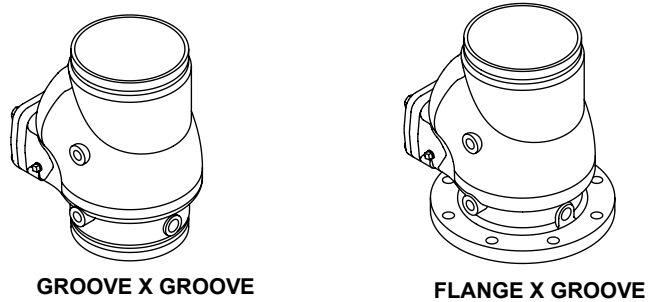
ITEM	PART NO.				DESCRIPTION	QTY.				MATERIAL SPECIFICATION
	200 NB	150 NB	100 NB	80 NB		200 NB	150 NB	100 NB	80 NB	
1	NA	NA	NA	NA	HOUSING (FLANGE X FLANGE)	1	1	1	1	DUCTILE IRON
1	NA	NA	NA	NA	HOUSING (FLANGE X GROOVE)	1	1	1	1	DUCTILE IRON
1	NA	NA	NA	NA	HOUSING (GROOVE X GROOVE)	1	1	1	1	DUCTILE IRON
2	NA	NA	NA	NA	SEAT	1	1	1	1	STAINLESS STEEL *
3	2600	2600	2600	2600	CLAPPER BUSH	2	2	2	2	BRASS
4	9102	9101	9101	9101	HEX. HEAD BOLT	4	1	1	1	STAINLESS STEEL
5	2636	2628	2619	2656	RUBBER CLAMP	1	1	1	1	STAINLESS STEEL
6	117769	117765	117761	117757	RUBBER SEAT	1	1	1	1	EPDM **
7	2634	2603	2617	2654	CLAPPER	1	1	1	1	DUCTILE IRON
8	2638	2608	2258	2658	HINGE PIN	1	1	1	1	STAINLESS STEEL
9	2599	2599	2599	2599	BODY BUSH	2	2	2	2	BRASS
10	9004	9004	9004	8373	HEX. HEAD BOLT	6	6	4	4	STEEL
11	9430	9430	9430	9430	SQ. HEAD PLUG	2	2	2	2	DUCTILE IRON
12	117767	117763	117759	117752	COVER GASKET	1	1	1	1	EPDM **
13	2631	2604	2615	2651	COVER	1	1	1	1	DUCTILE IRON

* Stainless Steel is a standard supply, Bronze is an optional supply

** EPDM is a standard supply, Neoprene is an optional supply

NA : Not Applicable as these parts cannot be replaced

**CONSTANT PRESSURE TRIM FOR ALARM VALVE MODEL - H
200 / 150 / 100 / 80 NB**



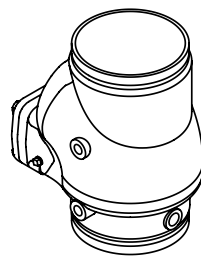
NOTES:-

- # - PRESSURE SWITCH (OPTIONAL)
- @ - NOT SUPPLIED WHEN PRESSURE SWITCH IS ORDERED
- Ⓧ - TO OPEN DRAIN
- ** - STANDARD LENGTH SUPPLY OR USER TO SPECIFY (TO SUIT AT SITE) FOR ANY ALTERATIONS.
- NO - NORMALLY OPEN
- NC - NORMALLY CLOSED

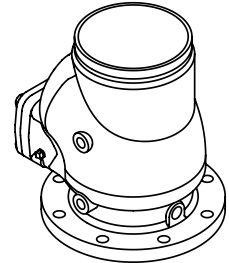
**CONSTANT PRESSURE TRIM FOR ALARM VALVE MODEL - H
200 / 150 / 100 / 80 NB**

ITEM NO.	CODE NO.	DESCRIPTION	SIZE	QUANTITY PER ALARM VALVE SIZE			
				200NB	150NB	100NB	80NB
1	8625	HEX NIPPLE	3/4"	4	4	5	2
2	8620	TEE	3/4"	3	3	3	2
3	8617	ELBOW	3/4"	2	2	2	-
3	8616	ELBOW	1/2"	-	-	-	2
4	8951	PIPE NIPPLE	3/4" X 150 MM LONG	1	-	-	-
4	9407	PIPE NIPPLE	3/4" X 130 MM LONG	-	1	-	-
4	9406	PIPE NIPPLE	3/4" X 100 MM LONG	-	-	1	-
4	9397	PIPE NIPPLE	1/2" X 100 MM LONG	-	-	-	1
5	9406	PIPE NIPPLE	3/4" X 100 MM LONG	1	-	-	-
5	9441	PIPE NIPPLE	3/4" X 80 MM LONG	-	1	-	-
6	9397	PIPE NIPPLE	1/2" X 100 MM LONG	1	1	-	1
6	9480	PIPE NIPPLE	1/2" X 80 MM LONG	-	-	1	-
7	8628	UNION	3/4"	1	1	1	-
7	8627	UNION	1/2"	-	-	-	1
8	9421	SWING CHECK VALVE	3/4"	1	1	1	-
8	9455	SWING CHECK VALVE	1/2"	-	-	-	1
9	8663	PIPE NIPPLE	3/4" X 70MM LONG	1	1	-	-
9	9426	PIPE NIPPLE	3/4" X 60MM LONG	-	-	1	-
9	9498	PIPE NIPPLE	1/2" X 75MM LONG	-	-	-	1
10	9423	BALL VALVE	1/2"	2	2	2	2
11	8633	REDUCING HEX NIPPLE	3/4" X 1/2"	-	-	-	1
12	8632	REDUCING HEX NIPPLE	3/4" X 1/4"	1	1	1	1
13	8631	REDUCING HEX NIPPLE	1/2" X 1/4"	1	1	1	1
14	9477	BALL VALVE	1/4"	2	2	2	2
15	8698	HEX NIPPLE	1/4"	2	2	2	2
16	8357	ELBOW	1/4"	2	2	2	2
17	114071	PRESSURE GAUGE	0-300 PSI, 'UL' LISTED	2	2	2	2
18	2301	ALARM TEST LINE ASSEMBLY	1/2"	-	-	-	1
18	2302	ALARM TEST LINE ASSEMBLY	1/2"	-	-	1	-
18	2303	ALARM TEST LINE ASSEMBLY	1/2"	-	1	-	-
18	2304	ALARM TEST LINE ASSEMBLY	1/2"	1	-	-	-
19	8355	REDUCING BUSH	3/4" X 1/2"	2	2	2	1
20	1027	RESTRICTION NOZZLE ASSEMBLY	-	1	1	1	1
21	117441	'Y' TYPE STRAINER	3/4"	1	1	1	1
22	8629	PLUG	1/2"	1	1	1	1
23	1416	SPRINKLER ALARM	-	1	1	1	1
24	8359	HEX NIPPLE	2"	1	1	1	-
24	8360	HEX NIPPLE	1-1/4"	-	-	-	1
25	9394	ANGLE VALVE	2"	1	1	1	-
25	9392	ANGLE VALVE	1-1/4"	-	-	-	1
26	9561	PIPE NIPPLE	1/2" X 60MM LONG	2	2	2	2
27	9441	PIPE NIPPLE	3/4" X 80MM LONG	1	1	1	1
28	8624	HEX NIPPLE	1/2"	3	3	3	5
29	8619	TEE	1/2"	2	2	2	3
30	9406	PIPE NIPPLE	3/4" X 100MM LONG	1	1	1	1
OPTIONAL							
P1	-	PRESSURE SWITCH	-	1	1	1	1

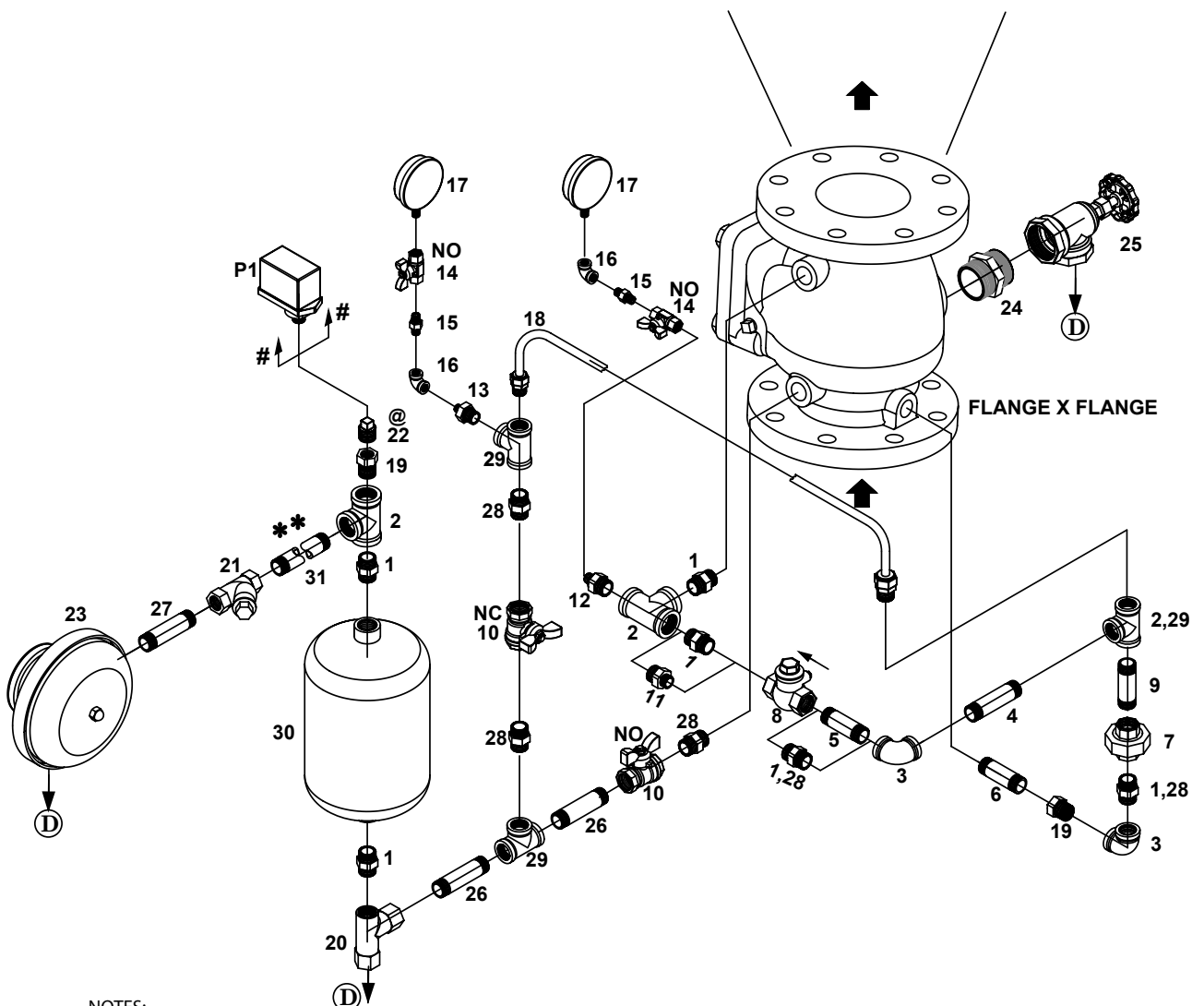
VARIABLE PRESSURE TRIM FOR ALARM VALVE MODEL - H
200 / 150 / 100 / 80 NB



GROOVE X GROOVE



FLANGE X GROOVE



NOTES: -

- PRESSURE SWITCH (OPTIONAL)

@ - NOT SUPPLIED WHEN PRESSURE SWITCH IS ORDERED

Ⓧ - TO OPEN DRAIN

** - STANDARD LENGTH SUPPLY OR USER TO SPECIFY (TO SUIT AT SITE) FOR ANY ALTERATIONS .

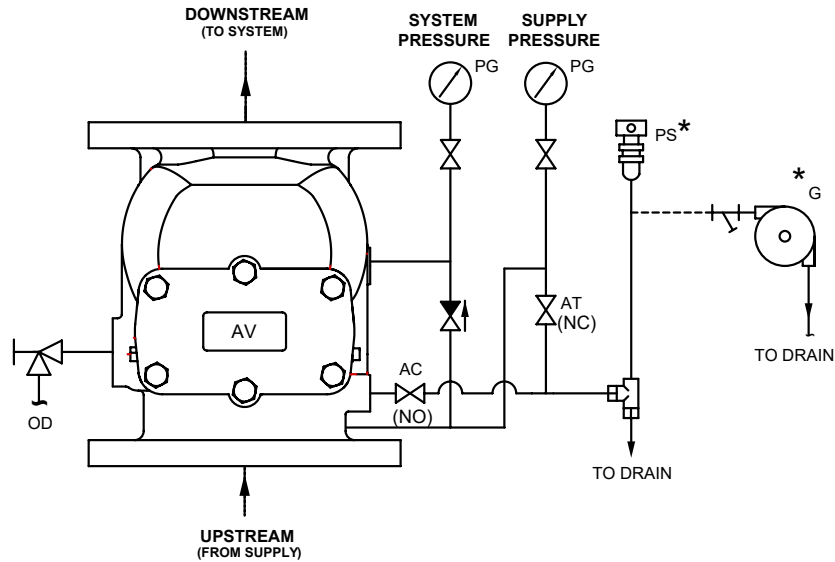
NO - NORMALLY OPEN

NC - NORMALLY CLOSED

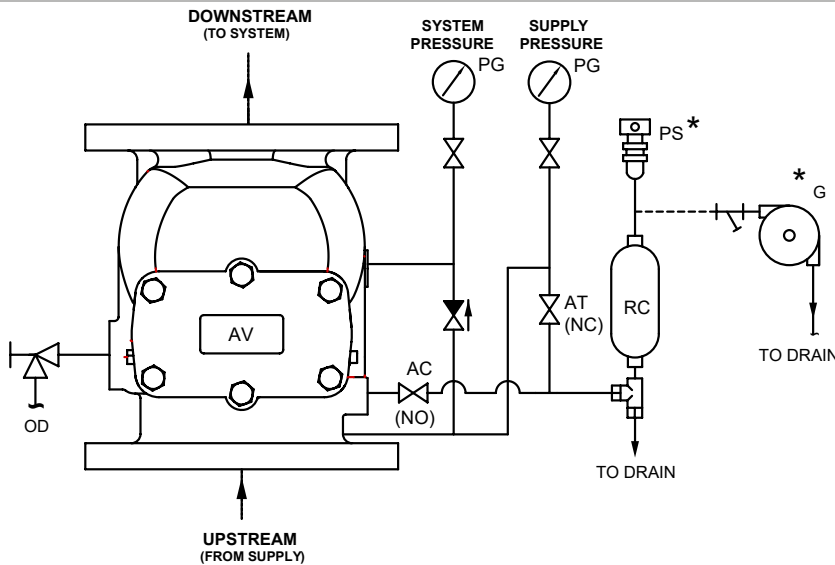
VARIABLE PRESSURE TRIM FOR ALARM VALVE MODEL - H
200 / 150 / 100 / 80 NB

ITEM NO.	CODE NO.	DESCRIPTION	SIZE	QUANTITY PER ALARM VALVE SIZE			
				200NB	150NB	100NB	80NB
1	8625	HEX NIPPLE	3/4"	5	5	6	3
2	8620	TEE	3/4"	3	3	3	2
3	8617	ELBOW	3/4"	2	2	2	-
3	8616	ELBOW	1/2"	-	-	-	2
4	8951	PIPE NIPPLE	3/4" X 150 MM LONG	1	-	-	-
4	9407	PIPE NIPPLE	3/4" X 130 MM LONG	-	1	-	-
4	9406	PIPE NIPPLE	3/4" X 100 MM LONG	-	-	1	-
4	9397	PIPE NIPPLE	1/2" X 100 MM LONG	-	-	-	1
5	9406	PIPE NIPPLE	3/4" X 100 MM LONG	1	-	-	-
5	9441	PIPE NIPPLE	3/4" X 80 MM LONG	-	1	-	-
6	9397	PIPE NIPPLE	1/2" X 100 MM LONG	1	1	-	1
6	9480	PIPE NIPPLE	1/2" X 80 MM LONG	-	-	1	-
7	8628	UNION	3/4"	1	1	1	-
7	8627	UNION	1/2"	-	-	-	1
8	9421	SWING CHECK VALVE	3/4"	1	1	1	-
8	9455	SWING CHECK VALVE	1/2"	-	-	-	1
9	8663	PIPE NIPPLE	3/4" X 70MM LONG	1	1	-	-
9	9426	PIPE NIPPLE	3/4" X 60MM LONG	-	-	1	-
9	9498	PIPE NIPPLE	1/2" X 75MM LONG	-	-	-	1
10	9423	BALL VALVE	1/2"	2	2	2	2
11	8633	REDUCING HEX NIPPLE	3/4" X 1/2"	-	-	-	1
12	8632	REDUCING HEX NIPPLE	3/4" X 1/4"	1	1	1	1
13	8631	REDUCING HEX NIPPLE	1/2" X 1/4"	1	1	1	1
14	9477	BALL VALVE	1/4"	2	2	2	2
15	8698	HEX NIPPLE	1/4"	2	2	2	2
16	8357	ELBOW	1/4"	2	2	2	2
17	114071	PRESSURE GUAGE	0-300 PSI, 'UL' LISTED	2	2	2	2
18	2301	ALARM TEST LINE ASSEMBLY	1/2"	-	-	-	1
18	2302	ALARM TEST LINE ASSEMBLY	1/2"	-	-	1	-
18	2303	ALARM TEST LINE ASSEMBLY	1/2"	-	1	-	-
18	2304	ALARM TEST LINE ASSEMBLY	1/2"	1	-	-	-
19	8355	REDUCING BUSH	3/4" X 1/2"	2	2	2	1
20	1027	RESTRICTION NOZZLE ASSEMBLY	-	1	1	1	1
21	117441	'Y' TYPE STRAINER	3/4"	1	1	1	1
22	8629	PLUG	1/2"	1	1	1	1
23	1416	SPRINKLER ALARM	-	1	1	1	1
24	8359	HEX NIPPLE	2"	1	1	1	-
24	8360	HEX NIPPLE	1-1/4"	-	-	-	1
25	9394	ANGLE VALVE	2"	1	1	1	-
25	9392	ANGLE VALVE	1-1/4"	-	-	-	1
26	9561	PIPE NIPPLE	1/2" X 60MM LONG	2	2	2	2
27	9441	PIPE NIPPLE	3/4" X 80MM LONG	1	1	1	1
28	8624	HEX NIPPLE	1/2"	3	3	3	5
29	8619	TEE	1/2"	2	2	2	3
30	2300	RETARD CHAMBER	-	1	1	1	1
31	9406	PIPE NIPPLE	3/4" X 100MM LONG	1	1	1	1
OPTIONAL							
P1	-	PRESSURE SWITCH	-	1	1	1	1

CONSTANT PRESSURE TRIM - SCHEMATIC
ALARM VALVE MODEL - H FLANGE X FLANGE 200/150/100/80 NB



VARIABLE PRESSURE TRIM - SCHEMATIC
ALARM VALVE MODEL - H FLANGE X FLANGE 200 / 150 / 100 / 80 NB



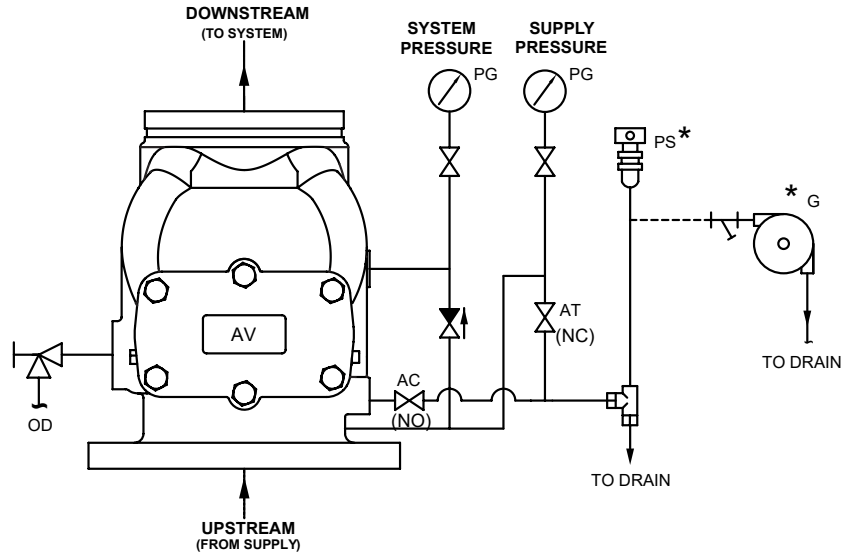
ABBREVIATION & SYMBOLS

	NON RETURN VALVE	NO - NORMALLY OPEN	PG - PRESSURE GAUGE
	VALVE	NC - NORMALLY CLOSE	PS - PRESSURE SWITCH
	ANGLE VALVE	OD - OPEN DRAIN	AC - SPRINKLER ALARM CONTROL VALVE
	STRAINER	AV - ALARM VALVE	AT - SPRINKLER ALARM TEST VALVE
	RESTRICTION NOZZLE ASSEMBLY	G - SPRINKLER ALARM	---- - BY USER (NOT IN 'HD' SCOPE OF SUPPLY)
	OPTIONAL	RC - RETARD CHAMBER	

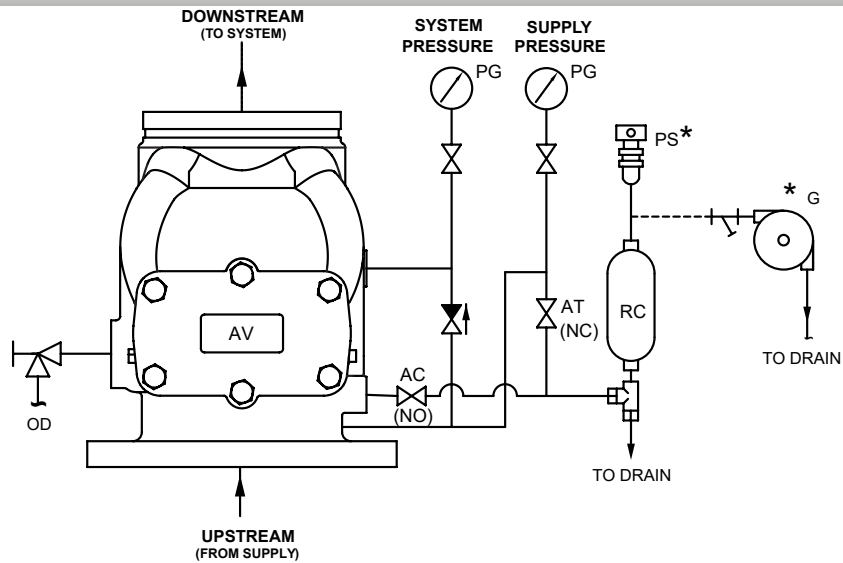
NOTE :-

- 1) SPRINKLER ALARM CONTROL VALVE MUST BE KEPT NORMALLY OPEN.
IF THIS VALVE IS KEPT CLOSED, THE SPRINKLER ALARM BELL/ ELECTRIC ALARM WILL NOT SIGNAL.
- 2) SPRINKLER ALARM TEST VALVE MUST BE KEPT NORMALLY CLOSED.
VALVE IS OPENED TO TEST THE SPRINKLER ALARM BELL /ELECTRIC ALARM.

CONSTANT PRESSURE TRIM - SCHEMATIC
ALARM VALVE MODEL - H FLANGE X GROOVE 200 / 150 / 100 / 80 NB



VARIABLE PRESSURE TRIM - SCHEMATIC
ALARM VALVE MODEL - H FLANGE X GROOVE 200 / 150 / 100 / 80 NB



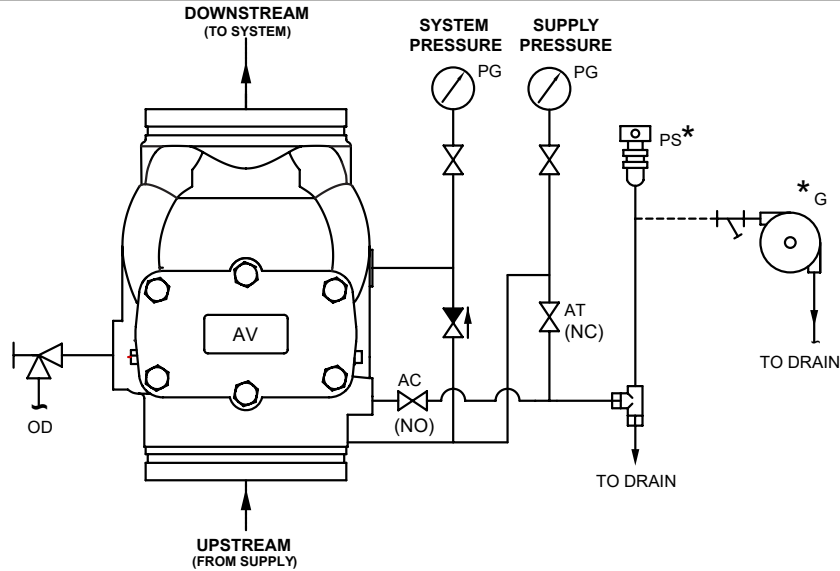
ABBREVIATION & SYMBOLS

	NON RETURN VALVE	NO - NORMALLY OPEN	PG - PRESSURE GAUGE
	VALVE	NC - NORMALLY CLOSE	PS - PRESSURE SWITCH
	ANGLE VALVE	OD - OPEN DRAIN	AC - SPRINKLER ALARM CONTROL VALVE
	STRAINER	AV - ALARM VALVE	AT - SPRINKLER ALARM TEST VALVE
	RESTRICTION NOZZLE ASSEMBLY	G - SPRINKLER ALARM	---- - BY USER (NOT IN 'HD' SCOPE OF SUPPLY)
	* OPTIONAL	RC - RETARD CHAMBER	

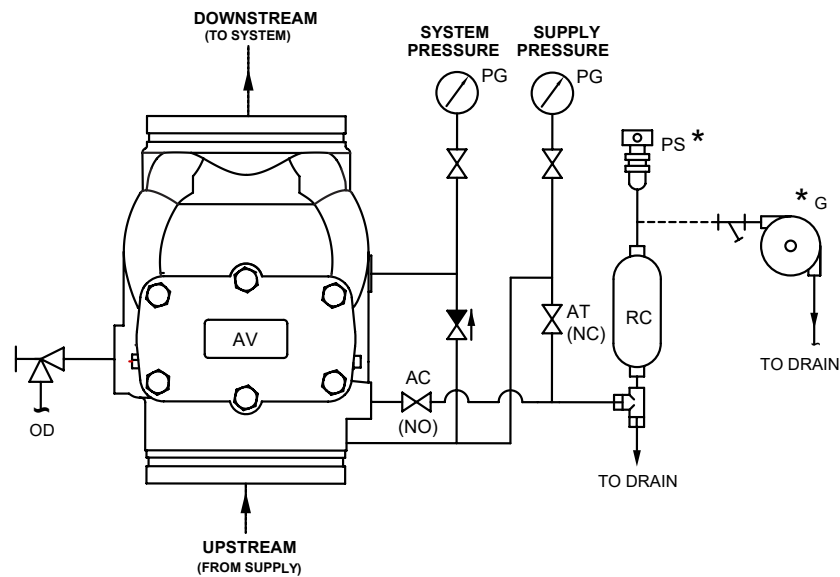
NOTE :-

- 1) SPRINKLER ALARM CONTROL VALVE MUST BE KEPT NORMALLY OPEN.
IF THIS VALVE IS KEPT CLOSED, THE SPRINKLER ALARM BELL/ ELECTRIC ALARM WILL NOT SIGNAL.
- 2) SPRINKLER ALARM TEST VALVE MUST BE KEPT NORMALLY CLOSED.
VALVE IS OPENED TO TEST THE SPRINKLER ALARM BELL /ELECTRIC ALARM.

CONSTANT PRESSURE TRIM - SCHEMATIC
ALARM VALVE MODEL - H GROOVE X GROOVE 200 / 150 / 100 / 80 NB



VARIABLE PRESSURE TRIM - SCHEMATIC
ALARM VALVE MODEL - H GROOVE X GROOVE 200 / 150 / 100 / 80 NB



ABBREVIATION & SYMBOLS

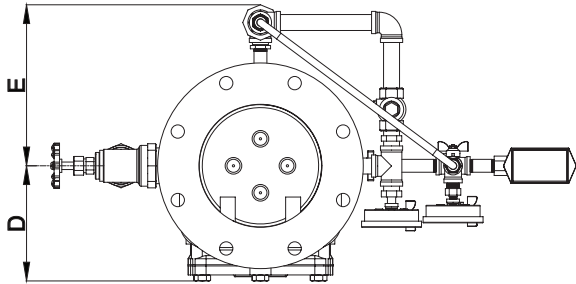
	NON RETURN VALVE	NO - NORMALLY OPEN	PG - PRESSURE GAUGE
	VALVE	NC - NORMALLY CLOSE	PS - PRESSURE SWITCH
	ANGLE VALVE	OD - OPEN DRAIN	AC - SPRINKLER ALARM CONTROL VALVE
	STRAINER	AV - ALARM VALVE	AT - SPRINKLER ALARM TEST VALVE
	RESTRICTION NOZZLE ASSEMBLY	G - SPRINKLER ALARM	---- - BY USER (NOT IN 'HD' SCOPE OF SUPPLY)
	* OPTIONAL	RC - RETARD CHAMBER	

NOTE :-

- 1) SPRINKLER ALARM CONTROL VALVE MUST BE KEPT NORMALLY OPEN.
IF THIS VALVE IS KEPT CLOSED, THE SPRINKLER ALARM BELL/ ELECTRIC ALARM WILL NOT SIGNAL.
- 2) SPRINKLER ALARM TEST VALVE MUST BE KEPT NORMALLY CLOSED.
VALVE IS OPENED TO TEST THE SPRINKLER ALARM BELL /ELECTRIC ALARM.

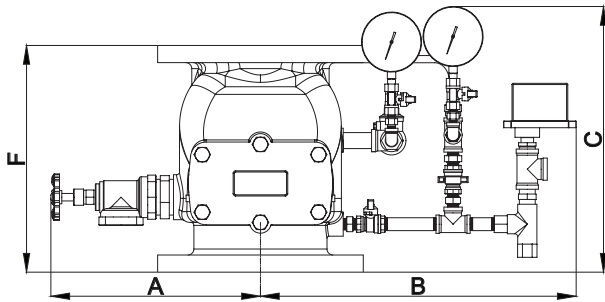
INSTALLATION DIMENSION WITH TRIM
ALARM VALVE MODEL - H FLANGE X FLANGE 200 / 150 / 100 / 80 NB

A) CONSTANT PRESSURE TRIM

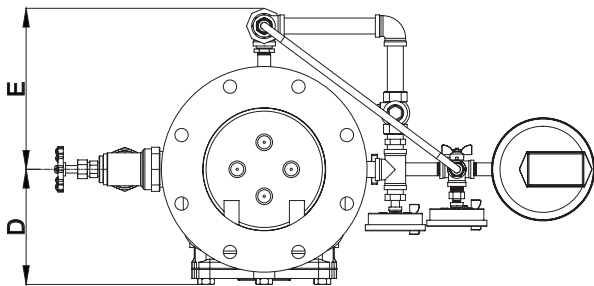


WITH CONSTANT PRESSURE TRIM				
SIZE	80NB	100NB	150NB	200NB
A	279	312	331	350
B	457	464	486	527
C	434	434	434	443
D	127	140	173	192
E	201	219	234	269
F	262	274	315	378

DIMENSIONS are approx. and in millimeters

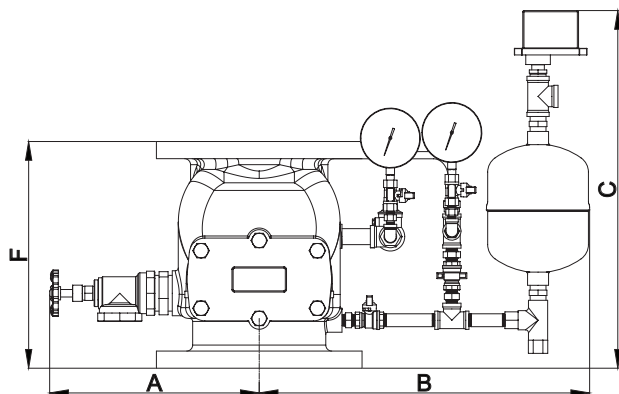


B) VARIABLE PRESSURE TRIM



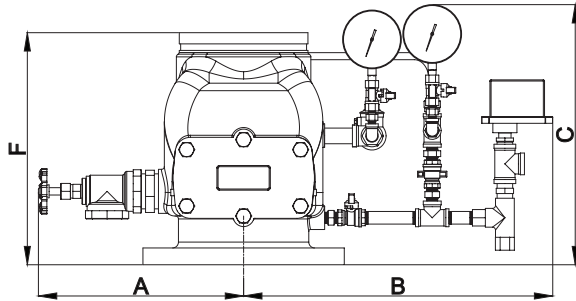
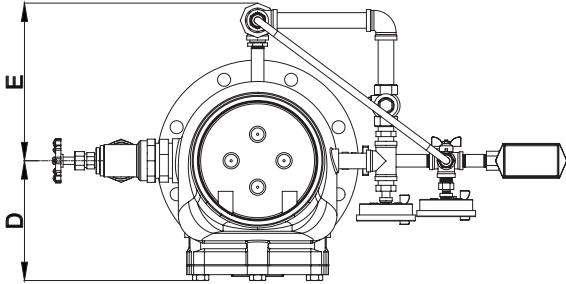
WITH VARIABLE PRESSURE TRIM				
SIZE	80NB	100NB	150NB	200NB
A	279	312	331	350
B	482	488	510	551
C	588	588	588	597
D	127	140	173	192
E	201	219	234	269
F	262	274	315	378

DIMENSIONS are approx. and in millimeters



INSTALLATION DIMENSION WITH TRIM
ALARM VALVE MODEL - H FLANGE X GROOVE 200 / 150 / 100 / 80 NB

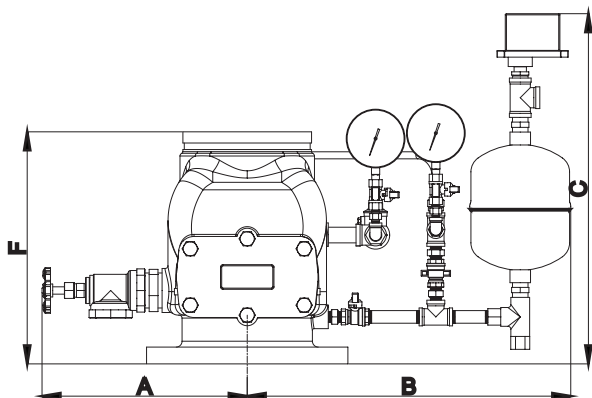
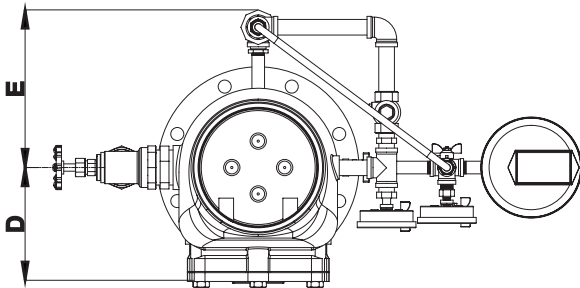
A) CONSTANT PRESSURE TRIM



WITH CONSTANT PRESSURE TRIM				
SIZE	80NB	100NB	150NB	200NB
A	279	312	331	350
B	457	464	486	527
C	434	434	434	443
D	127	140	173	204
E	201	219	234	269
F	275	291.3	316.8	395.2

DIMENSIONS are approx. and in millimeters

B) VARIABLE PRESSURE TRIM

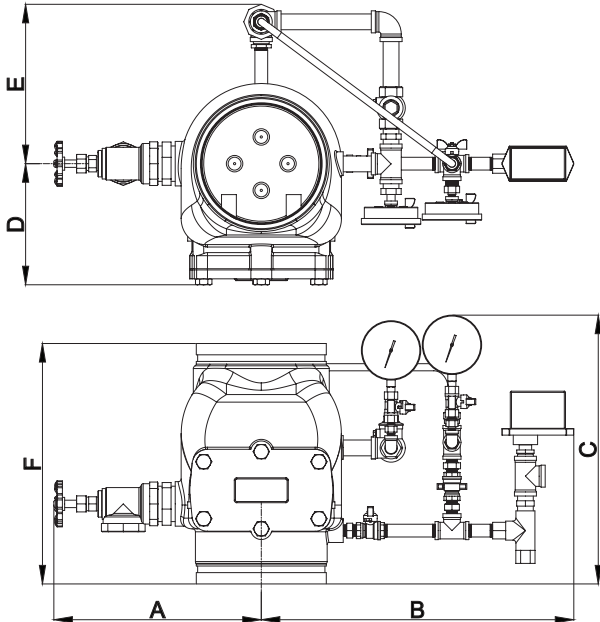


WITH VARIABLE PRESSURE TRIM				
SIZE	80NB	100NB	150NB	200NB
A	279	312	331	350
B	482	488	510	551
C	588	588	588	597
D	127	140	173	204
E	201	219	234	269
F	275	291.3	316.8	395.2

DIMENSIONS are approx. and in millimeters

INSTALLATION DIMENSION WITH TRIM
ALARM VALVE MODEL - H GROOVE X GROOVE 200 / 150 / 100 / 80 NB

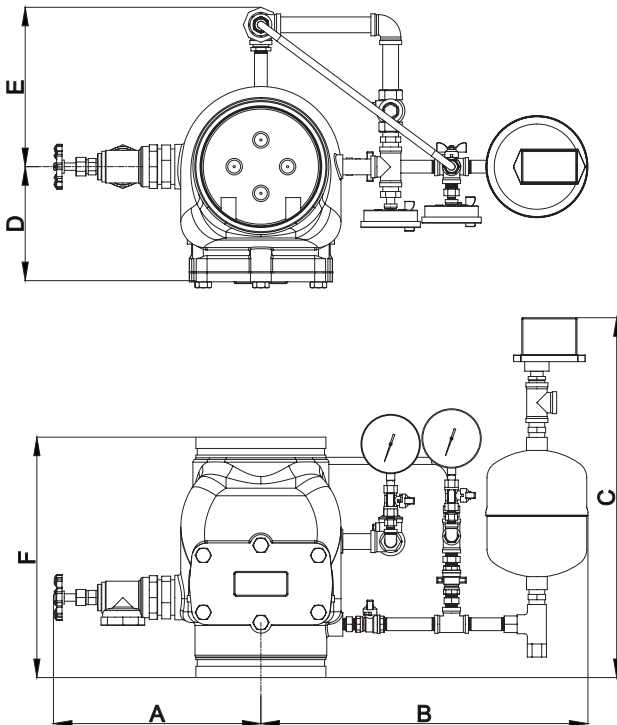
A) CONSTANT PRESSURE TRIM



WITH CONSTANT PRESSURE TRIM				
SIZE	80NB	100NB	150NB	200NB
A	279	312	331	350
B	457	464	486	527
C	439	443	442	443
D	127	140	173	204
E	201	219	234	269
F	280	300	324	405

DIMENSIONS are approx. and in millimeters

B) VARIABLE PRESSURE TRIM



WITH VARIABLE PRESSURE TRIM				
SIZE	80NB	100NB	150NB	200NB
A	279	312	331	350
B	482	488	510	551
C	593	596	596	607
D	127	140	173	204
E	201	219	234	269
F	280	300	324	405

DIMENSIONS are approx. and in millimeters

По вопросам продаж и поддержки обращайтесь:

Алматы (7273)495-231	Казань (843)206-01-48	Новокузнецк (3843)20-46-81	Смоленск (4812)29-41-54
Архангельск (8182)63-90-72	Калининград (4012)72-03-81	Новосибирск (383)227-86-73	Сочи (862)225-72-31
Астрахань (8512)99-46-04	Калуга (4842)92-23-67	Омск (3812)21-46-40	Ставрополь (8652)20-65-13
Барнаул (3852)73-04-60	Кемерово (3842)65-04-62	Орел (4862)44-53-42	Сургут (3462)77-98-35
Белгород (4722)40-23-64	Киров (8332)68-02-04	Оренбург (3532)37-68-04	Тверь (4822)63-31-35
Брянск (4832)59-03-52	Краснодар (861)203-40-90	Пенза (8412)22-31-16	Томск (3822)98-41-53
Владивосток (423)249-28-31	Красноярск (391)204-63-61	Пермь (342)205-81-47	Тула (4872)74-02-29
Волгоград (844)278-03-48	Курск (4712)77-13-04	Ростов-на-Дону (863)308-18-15	Тюмень (3452)66-21-18
Вологда (8172)26-41-59	Липецк (4742)52-20-81	Рязань (4912)46-61-64	Ульяновск (8422)24-23-59
Воронеж (473)204-51-73	Магнитогорск (3519)55-03-13	Самара (846)206-03-16	Уфа (347)229-48-12
Екатеринбург (343)384-55-89	Москва (495)268-04-70	Санкт-Петербург (812)309-46-40	Хабаровск (4212)92-98-04
Иваново (4932)77-34-06	Мурманск (8152)59-64-93	Саратов (845)249-38-78	Челябинск (351)202-03-61
Ижевск (3412)26-03-58	Набережные Челны (8552)20-53-41	Севастополь (8692)22-31-93	Череповец (8202)49-02-64
Иркутск (395)279-98-46	Нижний Новгород (831)429-08-12	Симферополь (3652)67-13-56	Ярославль (4852)69-52-93
Россия (495)268-04-70	Киргизия (996)312-96-26-47	Казахстан (7172)727-132	