

GVRS, GVNR

Технические характеристики

По вопросам продаж и поддержки обращайтесь:

Алматы (7273)495-231	Казань (843)206-01-48	Новокузнецк (3843)20-46-81	Смоленск (4812)29-41-54
Архангельск (8182)63-90-72	Калининград (4012)72-03-81	Новосибирск (383)227-86-73	Сочи (862)225-72-31
Астрахань (8512)99-46-04	Калуга (4842)92-23-67	Омск (3812)21-46-40	Ставрополь (8652)20-65-13
Барнаул (3852)73-04-60	Кемерово (3842)65-04-62	Орел (4862)44-53-42	Сургут (3462)77-98-35
Белгород (4722)40-23-64	Киров (8332)68-02-04	Оренбург (3532)37-68-04	Тверь (4822)63-31-35
Брянск (4832)59-03-52	Краснодар (861)203-40-90	Пенза (8412)22-31-16	Томск (3822)98-41-53
Владивосток (423)249-28-31	Красноярск (391)204-63-61	Пермь (342)205-81-47	Тула (4872)74-02-29
Волгоград (844)278-03-48	Курск (4712)77-13-04	Ростов-на-Дону (863)308-18-15	Тюмень (3452)66-21-18
Вологда (8172)26-41-59	Липецк (4742)52-20-81	Рязань (4912)46-61-64	Ульяновск (8422)24-23-59
Воронеж (473)204-51-73	Магнитогорск (3519)55-03-13	Самара (846)206-03-16	Уфа (347)229-48-12
Екатеринбург (343)384-55-89	Москва (495)268-04-70	Санкт-Петербург (812)309-46-40	Хабаровск (4212)92-98-04
Иваново (4932)77-34-06	Мурманск (8152)59-64-93	Саратов (845)249-38-78	Челябинск (351)202-03-61
Ижевск (3412)26-03-58	Набережные Челны (8552)20-53-41	Севастополь (8692)22-31-93	Череповец (8202)49-02-64
Иркутск (395)279-98-46	Нижний Новгород (831)429-08-12	Симферополь (3652)67-13-56	Ярославль (4852)69-52-93
Россия (495)268-04-70	Киргизия (996)312-96-26-47	Казахстан (7172)727-132	

Задвижки

- › Эластичные клиновые задвижки OS&Y и NRS
- › Рассчитан на максимальное рабочее давление 21 бар (300 фунтов на кв. дюйм).
- › Размер: от 50 до 300 мм (от 2 до 12 дюймов)
- › Фланцевое: ANSI B16.1/AWWA или BS EN 1092 PN16
- › Полностью инкапсулированный клиновой диск из ковкого чугуна из EPDM
- › Стержень из нержавеющей стали
- › Внутренние и внешние поверхности с эпоксидным покрытием Fusion Bond
- › Внесен в список UL и одобрен FM
- › Клапаны могут быть легко оснащены датчиком вскрытия OS&Y.



TECHNICAL DATA

MODELS:

OS&Y TYPE	GVRs 300 (2" to 12")
	GVRs-16-300 (2" to 8")
	GVRs-16-250 (10", 12")
	GVRs-300-GG (2" to 12")
	GVRs-16-300-GG (2" to 8")
	GVRs-16-250-GG (10", 12")
NRS	GVRs1-250 (2" to 24")
	GVRs1-16 (2" to 24")
	GVNR 300 (2.5" to 12")
	GVNR-16-300 (2.5" to 8")
	GVNR-16-250 (10" & 12")
	GVNR-300-GG (2" to 12")
	GVNR-16-300-GG (2" to 8")
	GVNR-16-250-GG (10", 12")

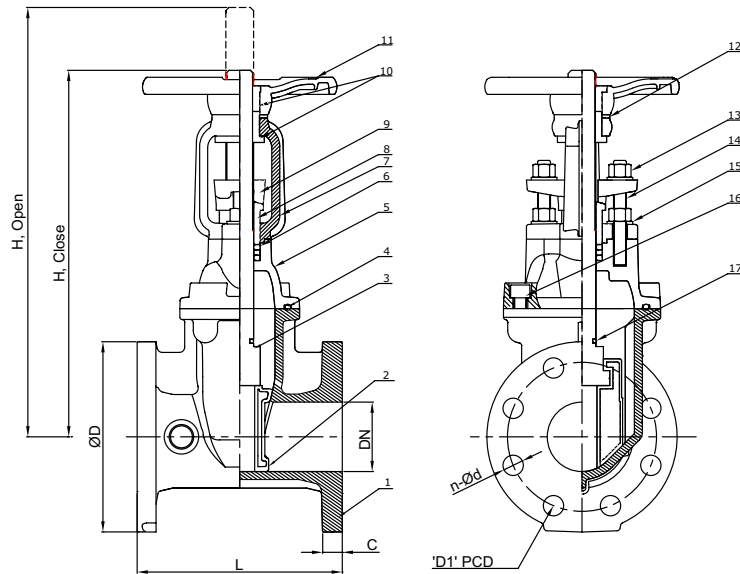
MAXIMUM WORKING PRESSURE	As per Table-1
FACTORY HYDRO TEST PRESSURE	As per Table-1
SIZE	2" To 24" (50 To 600 mm)
END CONNECTION	As per Table-1
FINISH	Red Fusion Bonded Epoxy Coated Inside and Outside
APPROVALS	UL Listed & FM Approved Manufacturing Standard AWWA C515, BS 5163 (Ref. Table-1)
ORDERING INFORMATION	Model, Size and Flange Connection (ANSI/BS)



TABLE-1

TYPE	MODEL NUMBER	MAXIMUM WORKING PRESSURE	FACTORY HYDRO TEST	END CONNECTION	APPROVALS	
OS&Y	GVRS 300	300 psi (21 bar)	Shell 600 psi Seal 450 psi	Flanged - ANSI B16.1/ AWWA	UL Listed & FM Approved. Manufacturing Standard AWWA C515, BS 5163	
	GVRS-300-GG			Grooved		
	GVRS-16-300	232 psi (16 bar)	Shell 464 psi Seal 348 psi	Flanged - BS EN 1092 PN16		
	GVRS-16-250			Flanged - BS EN 1092 PN16		
	GVRS-16-300-GG			Grooved		
	GVRS-16-250-GG			Grooved		
	GVRS1-250	250 psi (17.5 bar)	Shell 500 psi Seal 450 psi	Flanged - ANSI B16.1/ AWWA		UL Listed
	GVRS1-16	232 psi (16 bar)	Shell 464 psi Seal 348 psi	Flanged - BS EN 1092 PN16		
NRS	GVNR 300	300 psi (21 bar)	Shell 600 psi Seal 450 psi	Flanged - ANSI B16.1/ AWWA	UL Listed & FM Approved. Manufacturing Standard AWWA C515, BS 5163	
	GVNR-300-GG			Grooved		
	GVNR-16-300	232 psi (16 bar)	Shell 464 psi Seal 348 psi	Flanged - BS EN 1092 PN16		
	GVNR-16-250			Flanged - BS EN 1092 PN16		
	GVNR-16-300-GG			Grooved		
	GVNR-16-250-GG			Grooved		

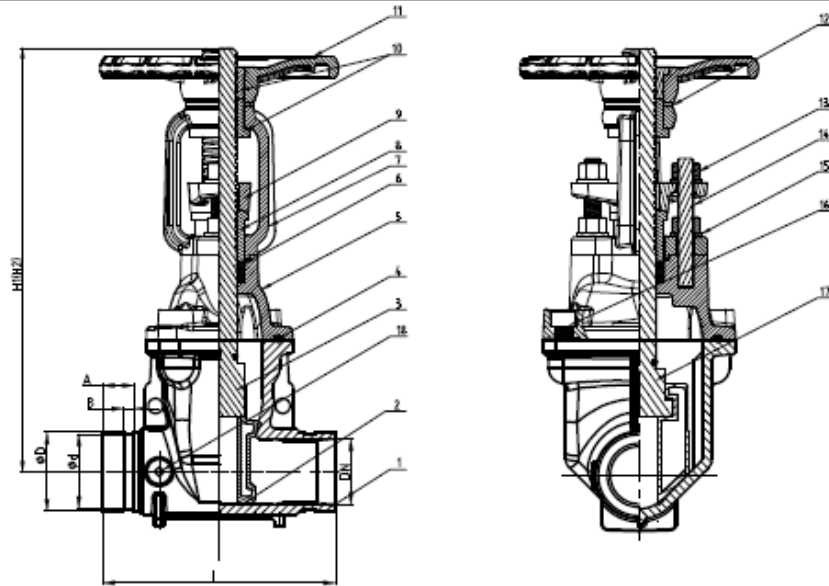
GVRS 300



Sr. No.	Description	Material
1	Valve Body	ASTM A536, 65-45-12
2	Resilient Wedge Disc	ASTM A536, 65-45-12+EPDM
3	Stem	AISI 420
4	Bonnet Gasket	EPDM
5	Bonnet	ASTM A536, 65-45-12
6	Washer	Brass Hpb59-1
7	YOKE	ASTM A536, 65-45-12
8	Stem Bushing	Brass Hpb59-1
9	Gland	ASTM A536, 65-45-12
10	Stem Nut	Brass Hpb59-1
11	Handwheel	ASTM A536, 65-45-12
12	Washer	Brass Hpb59-1
13	Gland Nut	Carbon Steel Zinc plated
14	Stud	Carbon Steel Zinc plated
15	Flat Washer	Carbon Steel Zinc plated
16	Nut	Carbon Steel Zinc plated
17	O-Ring	EPDM

Size (DN)		Dimensions (MM)						
Inch	MM	L	H (close)	H (open)	D	D1	C	n-Ø d
2"	50	178	318	370	152	120.7	16	4-Ø 19.1
2.5"	65	190	343	410	178	139.7	17.5	4-Ø 19.1
3"	80	203	386	468	191	152.4	19.1	4-Ø 19.1
4"	100	229	436	538	229	190.5	19.1	8-Ø 19.1
5"	125	254	516	640	254	215.9	19.1	8-Ø 22.2
6"	150	267	576	730	279	241.3	19.1	8-Ø 22.2
8"	200	292	749	950	343	298.5	22.2	8-Ø 22.2
10"	250	330	904	1158	406	362	23.8	12-Ø 25.4
12"	300	356	1030	1335	483	431.8	25.4	12-Ø 25.4

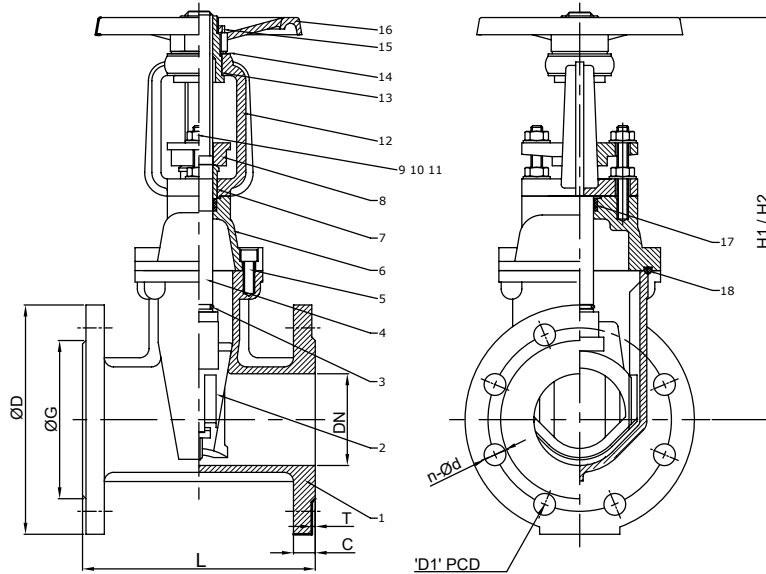
GVR3-300-GG



Sr. No.	Description	Material
1	Valve Body	Ductile Iron 65-45-12
2	Resilient Wedge Disc	Ductile Iron 65-45-12+EPDM
3	Stem	Stainless Steel 2Cr13
4	Bonnet Gasket	EPDM
5	Bonnet	Ductile Iron 65-45-12
6	Washer	C22000
7	Yoke	Ductile Iron 65-45-12
8	Stem Nut	Brass C22000
9	Gland flange	Ductile Iron 65-45-12
10	Wedge Nut	Brass C22000
11	Handwheel	Ductile Iron 65-45-12
12	Washer	C22000
13	Gland Nut	Carbon Steel Zinc Plated
14	Stud	Carbon Steel Zinc Plated
15	Flat Washer	Carbon Steel Zinc Plated
16	Bolt	Carbon Steel Zinc Plated
17	O-Ring	EPDM
18	Plug	ASTM B62 C83600

Size (DN)		Dimensions (mm)						
Inch	MM	L	H1 (close)	H2 (open)	ØD	Ød	A	B
2"	50	178	348	400	60.3	57.15	15.88	7.92
2.5"	65	190	373	440	73	69.09	15.88	7.92
3"	80	203	408	490	88.9	84.94	15.88	7.92
4"	100	229	471	573	114.3	110.08	15.88	9.52
5"	125	254	541	665	141.3	137.03	15.88	9.52
6"	150	267	601	755	168.3	163.96	15.88	9.52
8"	200	292	774	975	219.1	214.40	19.05	11.13
10"	250	330	939	1193	273.0	268.28	19.05	12.70
12"	300	356	1065	1370	323.9	318.29	19.05	12.70

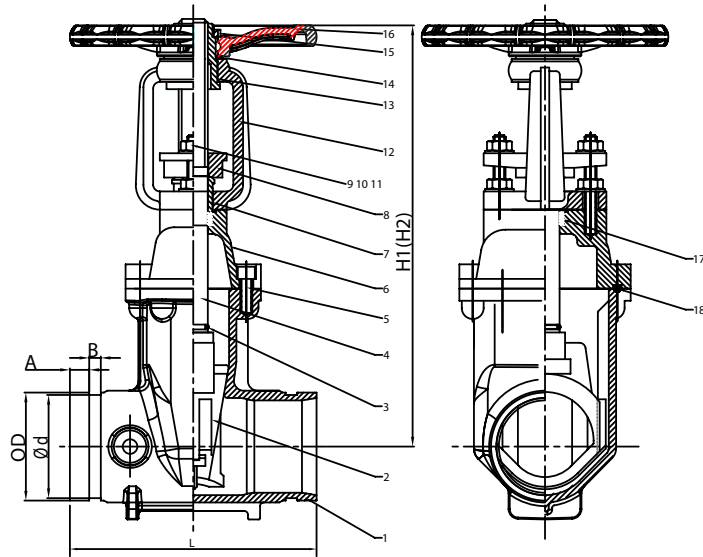
GVR-16-300 AND GVR-16-250



Sr. No.	Description	Material
1	Valve Body	EN-GJS-450-10
2	Resilient Wedge Disc	EN-GJS-450-10+EPDM
3	O-Ring	NBR
4	Stem	SS 420
5	Nut	Carbon Steel Zinc plated
6	Bonnet	EN-GJS-450-10
7	Stem Bushing	Brass Hpb59-1
8	Gland	EN-GJS-450-10
9	Flat Washer	Carbon Steel Zinc plated
10	Stud	Carbon Steel Zinc plated
11	Nut	Carbon Steel Zinc plated
12	Yoke	EN-GJS-450-10
13	Nut	Brass Hpb59-1
14	Washer	Brass Hpb59-1
15	Locknut	Carbon Steel Zinc plated
16	Handwheel	EN-GJS-450-10
17	Stem	NBR
18	Bonnet Gasket	EPDM

Size (DN)		Dimensions (mm)								
Inch	MM	L	H1 (close)	H2 (open)	D	D1	G	C	T	n-Ø d
2"	50	178	257	307	165	125	99	19	3	4-Ø 19
2.5"	65	190	305	370	185	145	118	19	3	4-Ø 19
3"	80	203	350	430	200	160	132	19	3	8-Ø 19
4"	100	229	422	522	220	180	156	19	3	8-Ø 19
5"	125	254	515	640	250	210	184	19	3	8-Ø 19
6"	150	267	563	713	285	240	211	19	3	8-Ø 23
8"	200	292	675	875	340	295	266	19	3	12-Ø 23
10"	250	330	905	1155	405	355	319	22	3	12-Ø 28
12"	300	356	1030	1330	460	410	370	24.5	4	12-Ø 28

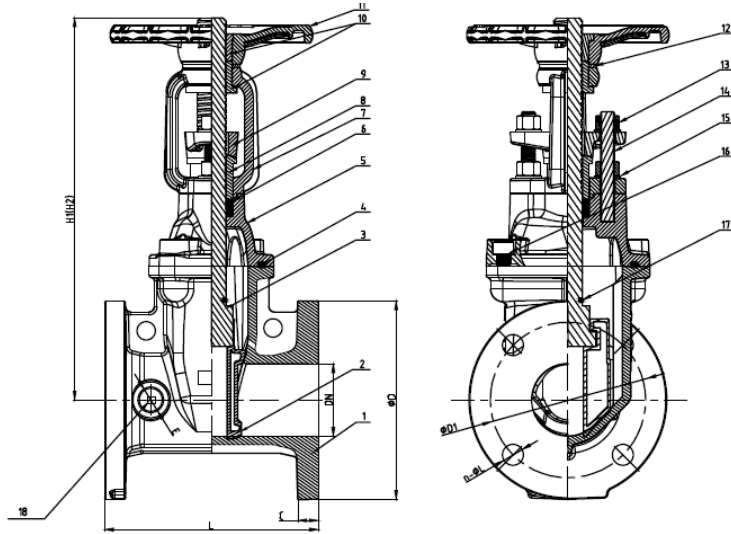
GVRs-16-300-GG AND GVRs-16-250-GG



Sr. No.	Description	Material (Standard Specification)	Options
1	Valve Body	EN-GJS-450-10	
2	Resilient Wedge Disc	EN-GJS-450-10+EPDM	
3	O-Ring	NBR	EPDM
4	Stem	SS420	SS304, SS316, SS431
5	Bolt	Carbon Steel Zinc Plated	SS304, SS316
6	Bonnet	EN-GJS-450-10	
7	Stem Bushing	Brass HPb59-1	
8	Gland	EN-GJS-450-10	
9	Flat Washer	Carbon Steel Zinc Plated	SS304, SS316
10	Stud	Carbon Steel Zinc Plated	SS304, SS316
11	Nut	Carbon Steel Zinc Plated	SS304, SS316
12	Yoke	EN-GJS-450-10	
13	Stem Nut	Brass HPb59-1	
14	Washer	Brass HPb59-1	
15	Lock Nut	Carbon Steel Zinc Plated (Type A) Not available (Type B)	
16	Handwheel	EN-GJS-450-10	
17	Stem Packing	EPDM	NBR
18	Bonnet Gasket	EPDM	NBR

Size (DN)		Dimensions (mm)						
Inch	MM	L	H1 (Close)	H2 (Open)	OD	Ød	A	B
2"	50	178	323	373	60.3	57.15	15.88	7.93
2.5"	65	190	343	408	73	69.09	15.88	7.93
2.5"	65	190	343	408	76.1	72.26	15.88	7.93
3"	80	203	370	450	88.9	84.94	15.88	7.93
4"	100	229	442	542	114.3	110.08	15.88	9.53
5"	125	254	541	665	139.7	135.48	15.88	9.53
5"	125	254	541	665	141.3	137.03	15.88	9.53
6"	150	267	608	758	159	154.5	15.88	9.53
6"	150	267	608	758	165.1	160.9	15.88	9.53
6"	150	267	608	758	168.3	163.96	15.88	9.53
8"	200	292	720	920	219.1	214.40	19.05	11.13
10"	250	330	939	1193	273	268.28	19.05	12.7
12"	300	356	1065	1370	323.9	318.29	19.05	12.7

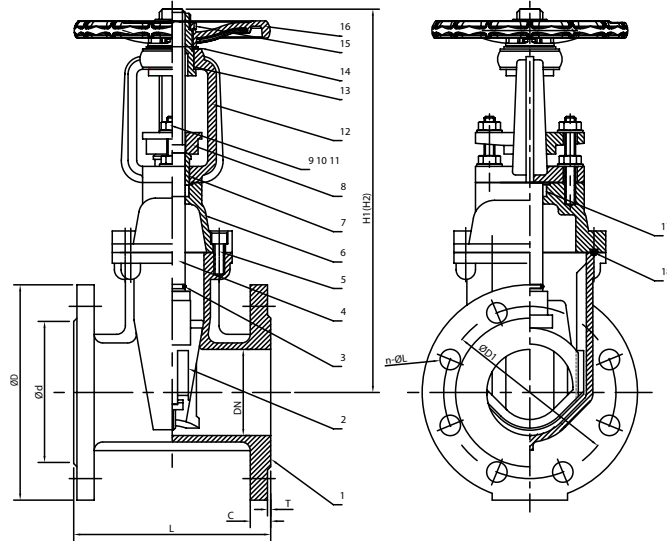
GVRS1-250



Sr. No.	Description	Material
1	Valve Body	ASTM A536, 65-45-12
2	Resilient Wedge Disc	ASTM A536, 65-45-12+EPDM
3	Stem	Stainless Steel 2Cr13
4	Bonnet Gasket	EPDM
5	Bonnet	ASTM A536, 65-45-12
6	Packing	EPDM
7	Yoke	ASTM A536, 65-45-12
8	Stem Bushing	Brass Hpb59-1
9	Gland	ASTM A536, 65-45-12
10	Stem Nut	Brass Hpb59-1
11	Handwheel	ASTM A536, 65-45-12
12	Washer	Brass Hpb59-1
13	Gland Nut	Carbon Steel Zinc plated
14	Stud	Carbon Steel Zinc plated
15	Flat Washer	Carbon Steel Zinc plated
16	Bolt	Carbon Steel Zinc plated
17	O-Ring	NBR
18	Plug	C89833

DN		Dimensions (mm)													
		L		H1(Close)		H2 (Open)		D		D1		C		n-ØL	
Inch	mm	Inch	mm	Inch	mm	Inch	mm	Inch	mm	Inch	mm	Inch	mm	Inch	mm
2"	50	7.01	178	13.70	348	15.75	400	5.98	152	4.75	120.7	0.63	16	4-Ø0.75	4-Ø19.1
2.5"	65	7.48	190	14.69	373	17.32	440	7.01	178	5.50	139.7	0.69	17.5	4-Ø0.75	4-Ø19.1
3"	80	7.99	203	16.06	408	19.29	490	7.52	191	6.00	152.4	0.75	19.1	4-Ø0.75	4-Ø19.1
4"	100	9.02	229	18.54	471	22.56	573	9.02	229	7.50	190.5	0.75	19.1	8-Ø0.75	8-Ø19.1
5"	125	10.00	254	21.30	541	26.18	665	10.00	254	8.50	215.9	0.75	19.1	8-Ø0.87	8-Ø22.2
6"	150	10.51	267	23.66	601	29.72	755	10.98	279	9.50	241.3	0.75	19.1	8-Ø0.87	8-Ø22.2
8"	200	11.50	292	30.47	774	38.39	975	13.50	343	11.75	298.5	0.87	22.2	8-Ø0.87	8-Ø22.2
10"	250	12.99	330	40.51	1029	50.51	1283	15.98	406	14.25	362	0.94	23.8	12-Ø1	12-Ø25.4
12"	300	14.02	356	41.93	1065	53.94	1370	19.02	483	17.00	431.8	1.00	25.4	12-Ø1	12-Ø25.4
14"	350	15.00	381	47.64	1210	61.42	1560	20.98	533	18.75	476.3	1.00	25.4	12-Ø1.13	12-Ø28.6
16"	400	15.98	406	50.39	1280	66.14	1680	23.50	597	21.25	539.8	1.00	25.4	12-Ø1.13	16-Ø28.6
18"	450	17.01	432	69.29	1760	87.01	2210	25.00	635	22.75	577.9	1.00	25.4	16-Ø1.25	16-Ø31.8
20"	500	17.99	457	70.08	1780	89.76	2280	27.52	699	25.00	635	1.13	28.6	16-Ø1.25	20-Ø31.8
24"	600	20.00	508	76.77	1950	100.39	2550	32.01	813	29.50	749.3	1.19	30.1	20-Ø1.37	20-Ø34.9

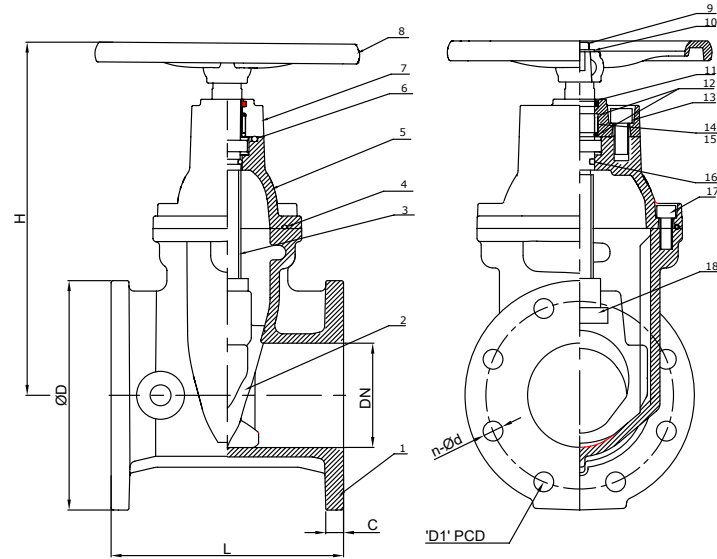
GVR S1-16



Sr. No.	Description	Material	Options
1	Valve Body	EN-GJS-450-10	
2	Resilient Wedge Disc	EN-GJS-450-10+EPDM	
3	O-Ring	NBR	EPDM
4	Stem	SS420	SS304, SS316, SS431
5	Bolt	Carbon Steel Zinc Plated	SS304, SS316
6	Bonnet	EN-GJS-450-10	
7	Stem Bushing	Brass HPb59-1	
8	Gland	EN-GJS-450-10	
9	Flat Washer	Carbon Steel Zinc Plated	SS304, SS316
10	Stud	Carbon Steel Zinc Plated	SS304, SS316
11	Nut	Carbon Steel Zinc Plated	SS304, SS316
12	Yoke	EN-GJS-450-10	
13	Stem Nut	Brass HPb59-1	
14	Washer	Brass HPb59-1	
15	Lock Nut	Carbon Steel Zinc Plated (Type A) Not Available (Type B)	
16	Hand Wheel	EN-GJS-450-10	
17	Stem Packing	EPDM	NBR
18	Bonnet Gasket	EPDM	NBR

DN		PN	Dimensions (mm)										
Inch	mm		L	Type A		Type B		D	D1	d	C	T	n-ØL
		H1 (Close)		H2 (Open)	H1 (Close)	H2 (Open)							
2"	50	10/16	178	323	373	348	400	165	125	99	19	3	4-Ø19
2.5"	65	10/16	190	343	408	373	440	185	145	118	19	3	4-Ø19
3"	80	10/16	203	370	450	408	490	200	160	132	19	3	8-Ø19
4"	100	10/16	229	442	542	471	573	220	180	156	19	3	8-Ø19
5"	125	10/16	254	541	665	541	665	250	210	184	19	3	8-Ø19
6"	150	10/16	267	608	758	601	755	285	240	211	19	3	8-Ø23
8"	200	10	292	720	920	774	975	340	295	266	20	3	8-Ø23
		16											12-Ø23
10"	250	10	330	939	1193	939	1193	405	350	319	22	3	12-Ø23
		16							355				12-Ø28
12"	300	10	356	1065	1370	1065	1370	460	400	370	24.5	4	12-Ø23
		16							410				12-Ø28
14"	350	10	381	1210	1560	1210	1560	520	460	429	26.5	4	16-Ø23
		16							470				16-Ø28
16"	400	10	406	1280	1680	1280	1680	580	515	480	28	4	16-Ø28
		16							525				16-Ø31
18"	450	10	432	1760	2210	1760	2210	640	565	530	30	4	20-Ø28
		16							585	548			20-Ø31
20"	500	10	457	1780	2280	1780	2280	715	620	582	31.5	4	20-Ø28
		16							650	609			20-Ø34
24"	600	10	508	1950	2550	1950	2550	840	725	682	36	5	20-Ø31
		16							770	720			20-Ø37

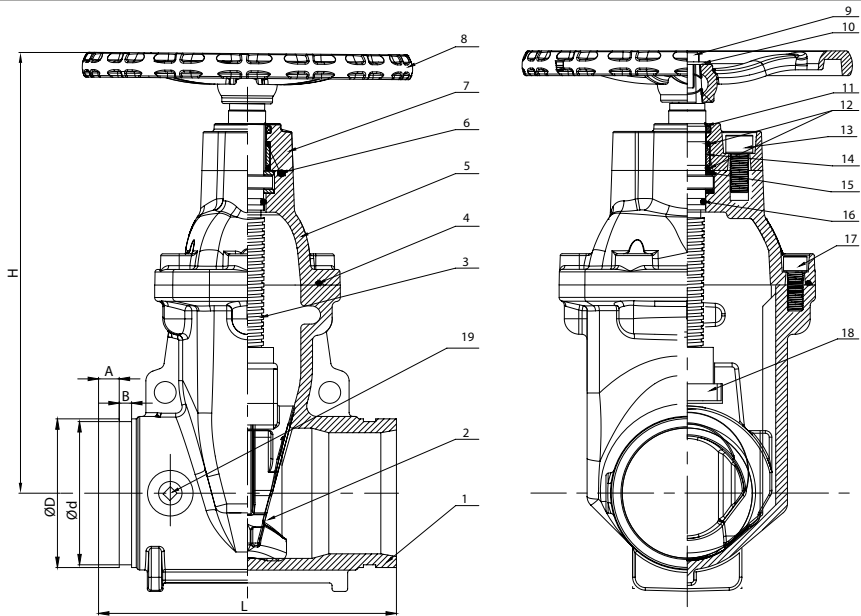
GVNR 300



Sr. No.	Description	Material
1	Valve Body	ASTM A536, 65-45-12
2	Resilient Wedge Disc	ASTM A536, 65-45-12+EPDM
3	Stem	AISI 431
4	Bonnet Gasket	EPDM
5	Bonnet	ASTM A536, 65-45-12
6	O-Ring	EPDM
7	Gland	ASTM A536, 65-45-12
8	Handwheel	ASTM A536, 65-45-12
9	Bolt	Carbon Steel Zinc plated
10	Flat Washer	Carbon Steel Zinc plated
11	Ring Wiper	EPDM
12	O-Ring	NBR
13	Nut	Carbon Steel Zinc plated
14	Axis Guide	Brass Hpb59-1
15	Washer	Brass Hpb59-1
16	O-Ring	NBR
17	Nut	Carbon Steel Zinc plated
18	Wedge Nut	Brass Hpb59-1

Size (DN)		Dimensions (MM)					
Inch	MM	L	H	D	D1	C	n-Ø d
2"	50	178	254	152	102.7	16	4-Ø 19.1
2.5"	65	190	275	178	139.7	17.5	4-Ø 19.1
3"	80	203	301	191	152.4	19.1	4-Ø 19.1
4"	100	229	355	229	190.5	19.1	8-Ø 19.1
5"	125	254	393	254	215.9	19.1	8-Ø 22.2
6"	150	267	448	279	241.3	19.1	8-Ø 22.2
8"	200	292	548	343	298.5	22.2	8-Ø 22.2
10"	250	330	626	406	362	23.8	12-Ø 25.4
12"	300	356	722	483	431.8	25.4	12-Ø 25.4

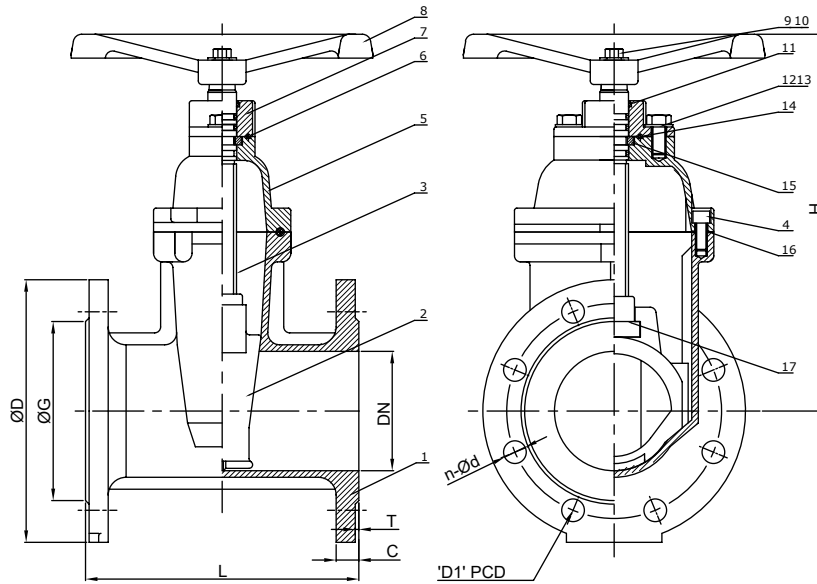
GVNR-300-GG



Sr. No.	Description	Material
1	Valve Body	ASTM A536, 65-45-12
2	Resilient Wedge Disc	ASTM A536, 65-45-12+EPDM
3	Stem	Stainless Steel
4	Bonnet Gasket	EPDM
5	Bonnet	ASTM A536, 65-45-12
6	O-Ring	NBR
7	Gland	ASTM A536, 65-45-12
8	Handwheel	ASTM A536, 65-45-12
9	Bolt	Carbon Steel Zinc plated
10	Flat Washer	Carbon Steel Zinc plated
11	Ring Wiper	EPDM
12	O-Ring	NBR
13	Bolt	Carbon Steel Zinc plated
14	Axis Guide	Brass Hpb59-1
15	Washer	Brass Hpb59-1
16	O-Ring	NBR
17	Bolt	Carbon Steel Zinc plated
18	Wedge Nut	Brass Hpb59-1
19	Plug	ASTM B584-06a C89833

DN		Dimensions (Inch)					
Inch	MM	L	H	ØD	Ød	A	B
2"	50	7.00	10.00	2.375	2.250	0.625	0.312
2.5"	65	7.48	10.83	2.875	2.750	0.625	0.312
3"	80	8.00	11.85	3.500	3.344	0.625	0.312
4"	100	9.00	13.98	4.500	4.334	0.625	0.375
5"	125	10.00	15.47	5.563	5.395	0.625	0.375
6"	150	10.50	17.64	6.625	6.455	0.625	0.375
8"	200	11.50	21.57	8.625	8.441	0.750	0.438
10"	250	13.00	24.65	10.750	10.562	0.750	0.500
12"	300	14.00	28.43	12.750	12.531	0.750	0.500

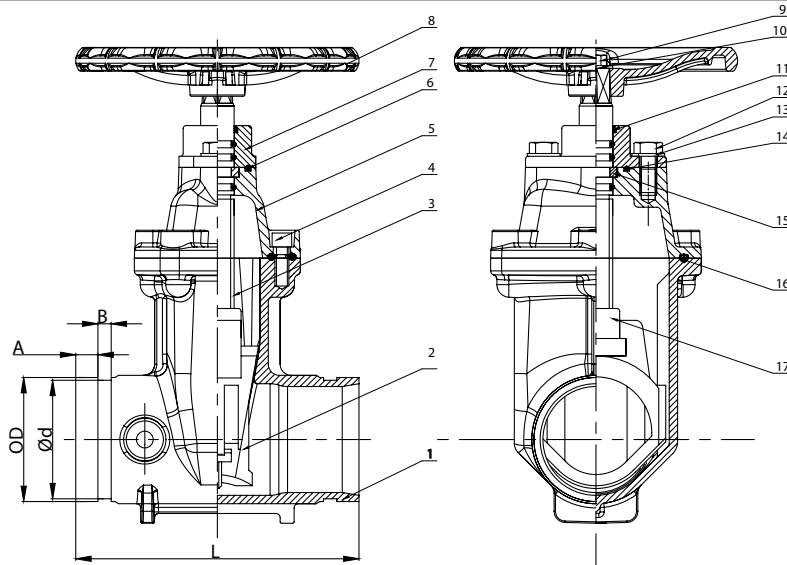
GVNR-16-300 AND GVNR-16-250



Sr. No.	Description	Material
1	Valve Body	EN-GJS-450-10
2	Resilient Wedge Disc	EN-GJS-450-10+EPDM
3	Stem	SS 420
4	Nut	Carbon Steel Zinc plated
5	Bonnet	EN-GJS-450-10
6	O-Ring	NBR
7	Gland Stem	EN-GJS-450-10
8	Handwheel	EN-GJS-450-10
9	Bolt	Carbon Steel Zinc plated
10	Flat Washer	Carbon Steel Zinc plated
11	Ring Wiper	NBR
12	Bolt	Carbon Steel Zinc plated
13	Flat Washer	Carbon Steel Zinc plated
14	O-Ring	NBR
15	Thrust Washer	Brass Hpb59-1
16	Bonnet Gasket	EPDM
17	Wedge Nut	NBR

Size (DN)		Dimensions (mm)							
Inch	MM	L	H	D	D1	G	C	T	n-Ø d
2"	50	178	257	165	125	99	19	3	4-Ø 19
2.5"	65	190	305	185	145	118	19	3	4-Ø 19
3"	80	203	350	200	160	132	19	3	8-Ø 19
4"	100	229	422	220	180	156	19	3	8-Ø 19
5"	125	254	515	250	210	184	19	3	8-Ø 19
6"	150	267	563	285	240	211	19	3	8-Ø 23
8"	200	292	675	340	295	266	19	3	12-Ø 23
10"	250	330	905	405	355	319	22	3	12-Ø 28
12"	300	356	1030	460	410	370	24.5	4	12-Ø 28

GVNR-16-300-GG AND GVNR-16-250-GG



Sr. No.	Description	Material	Options
1	Valve Body	EN-GJS-450-10	
2	Resilient Wedge Disc	EN-GJS-450-10+EPDM	
3	Stem	SS 420	SS304, SS316, SS431
4	Bolt	Carbon Steel Zinc plated	SS304, SS316
5	Bonnet	EN-GJS-450-10	
6	O-Ring	NBR	EPDM
7	Gland	EN-GJS-450-10	
8	Handwheel	EN-GJS-450-10	
9	Bolt	Carbon Steel Zinc plated	SS304, SS316
10	Flat Washer	Carbon Steel Zinc plated	SS304, SS316
11	Ring Wiper	EPDM	NBR
12	Bolt	Carbon Steel Zinc plated	SS304, SS316
13	Flat Washer	Carbon Steel Zinc plated	SS304, SS316
14	O-Ring	NBR	EPDM
15	Thrust Washer	Brass Hpb59-1	Bronze ZQSn5-5-5
16	Bonnet Gasket	EPDM	
17	Wedge Nut	Brass Hpb59-1	Bronze ZQSn5-5-5

Size (DN)		Dimensions (mm)					
Inch	MM	L	H	OD	d	A	B
2"	50	178	218	60.3	57.15	15.88	7.93
2.5"	65	190	230	73	69.09	15.88	7.93
2.5"	65	190	230	76.1	72.26	15.88	7.93
3"	80	203	281	88.9	84.94	15.88	7.93
4"	100	229	316	114.3	110.08	15.88	9.53
5"	125	254	393	139.7	135.48	15.88	9.53
5"	125	254	393	141.3	137.03	15.88	9.53
6"	150	267	420	159	154.5	15.88	9.53
6"	150	267	420	165.1	160.9	15.88	9.53
6"	150	267	420	168.3	163.96	15.88	9.53
8"	200	292	490	219.1	214.4	19.05	11.13
10"	250	330	626	273	268.28	19.05	12.7
12"	300	356	722	323.9	318.29	19.05	12.7

По вопросам продаж и поддержки обращайтесь:

Алматы (7273)495-231	Казань (843)206-01-48	Новокузнецк (3843)20-46-81	Смоленск (4812)29-41-54
Архангельск (8182)63-90-72	Калининград (4012)72-03-81	Новосибирск (383)227-86-73	Сочи (862)225-72-31
Астрахань (8512)99-46-04	Калуга (4842)92-23-67	Омск (3812)21-46-40	Ставрополь (8652)20-65-13
Барнаул (3852)73-04-60	Кемерово (3842)65-04-62	Орел (4862)44-53-42	Сургут (3462)77-98-35
Белгород (4722)40-23-64	Киров (8332)68-02-04	Оренбург (3532)37-68-04	Тверь (4822)63-31-35
Брянск (4832)59-03-52	Краснодар (861)203-40-90	Пенза (8412)22-31-16	Томск (3822)98-41-53
Владивосток (423)249-28-31	Красноярск (391)204-63-61	Пермь (342)205-81-47	Тула (4872)74-02-29
Волгоград (844)278-03-48	Курск (4712)77-13-04	Ростов-на-Дону (863)308-18-15	Тюмень (3452)66-21-18
Вологда (8172)26-41-59	Липецк (4742)52-20-81	Рязань (4912)46-61-64	Ульяновск (8422)24-23-59
Воронеж (473)204-51-73	Магнитогорск (3519)55-03-13	Самара (846)206-03-16	Уфа (347)229-48-12
Екатеринбург (343)384-55-89	Москва (495)268-04-70	Санкт-Петербург (812)309-46-40	Хабаровск (4212)92-98-04
Иваново (4932)77-34-06	Мурманск (8152)59-64-93	Саратов (845)249-38-78	Челябинск (351)202-03-61
Ижевск (3412)26-03-58	Набережные Челны (8552)20-53-41	Севастополь (8692)22-31-93	Череповец (8202)49-02-64
Иркутск (395)279-98-46	Нижний Новгород (831)429-08-12	Симферополь (3652)67-13-56	Ярославль (4852)69-52-93
Россия (495)268-04-70	Киргизия (996)312-96-26-47	Казахстан (7172)727-132	